



*efi* | OPTITEX

# DID YOU KNOW?

Close Reopen Darts

**Did you know... You should...?**

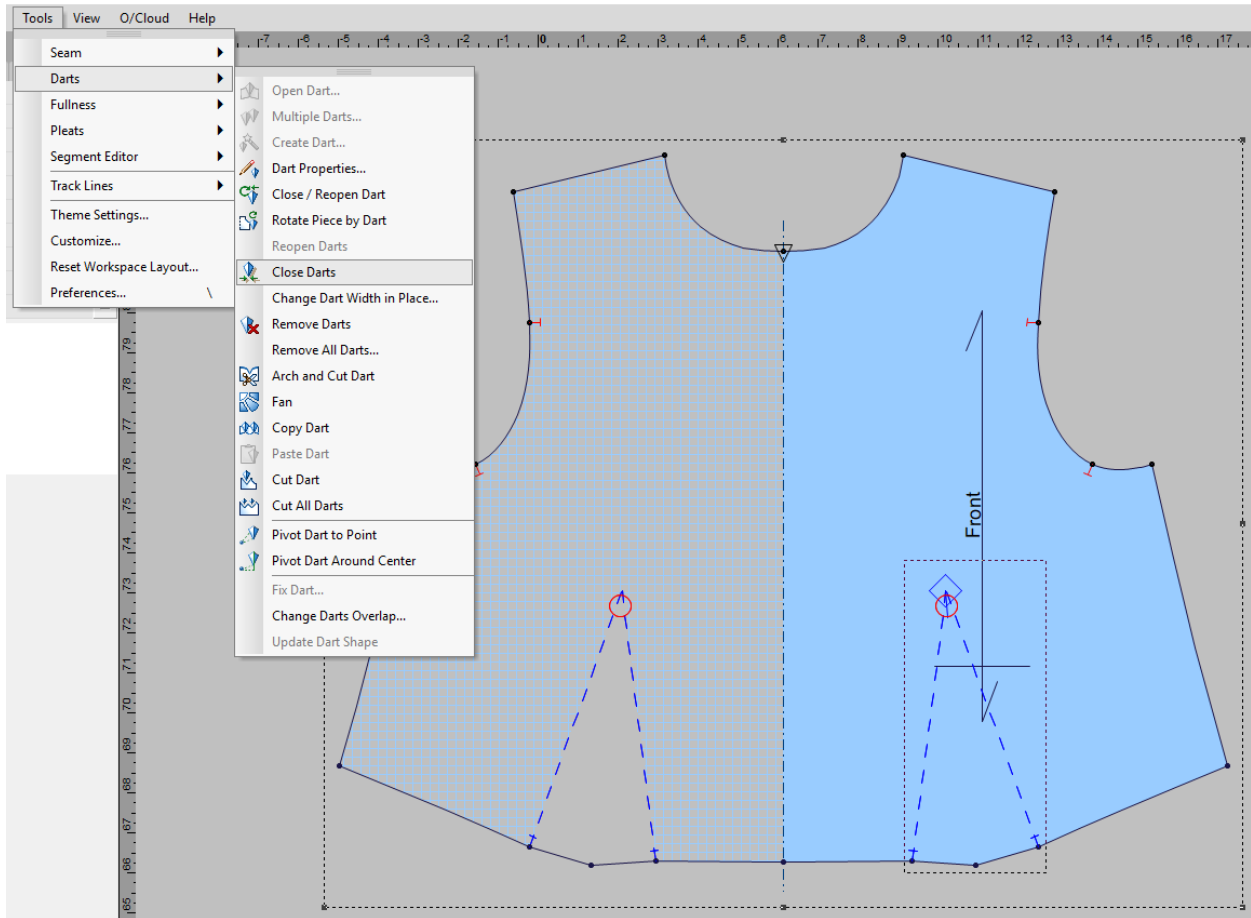
Use the Close Reopen Dart tool when you want to close a dart to check the pattern and not the Close Dart function?

On a paper pattern or a piece of fabric, when a dart is closed this will create a 3-dimensional shape like a cone, because the system is working with 2D patterns this cannot be done. The Close / Reopen Dart tool will compensate for that by rotating the fullness to another location. Using the Close Dart tool, the dart will be closed by simply removing the fullness by closing the pattern from the dart all the way across the pattern.

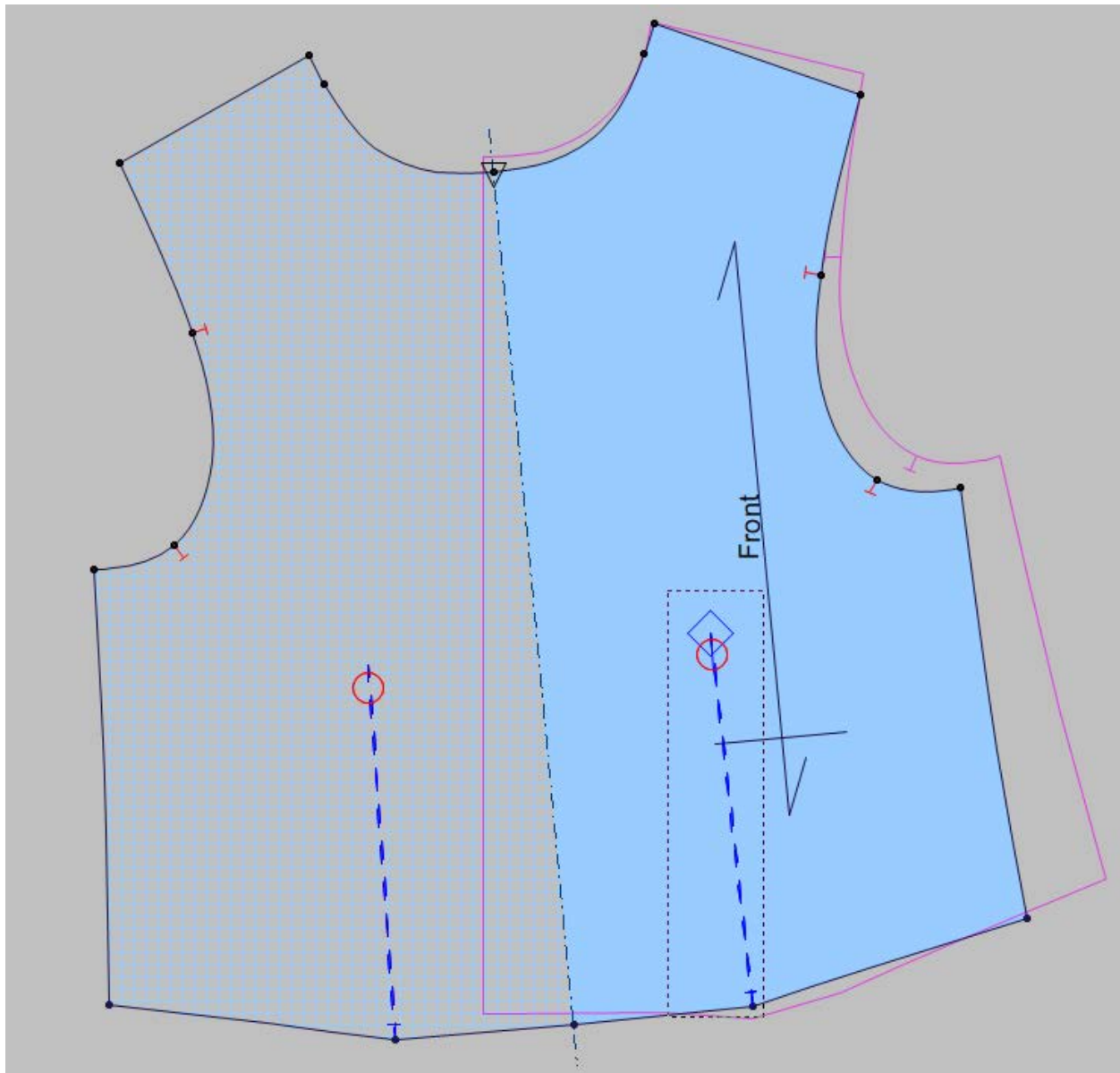
This will take you through the steps for each tool and how they work.

## Close Dart

Select the Dart, then Under the Tools Menu and the Darts section select Close Dart.



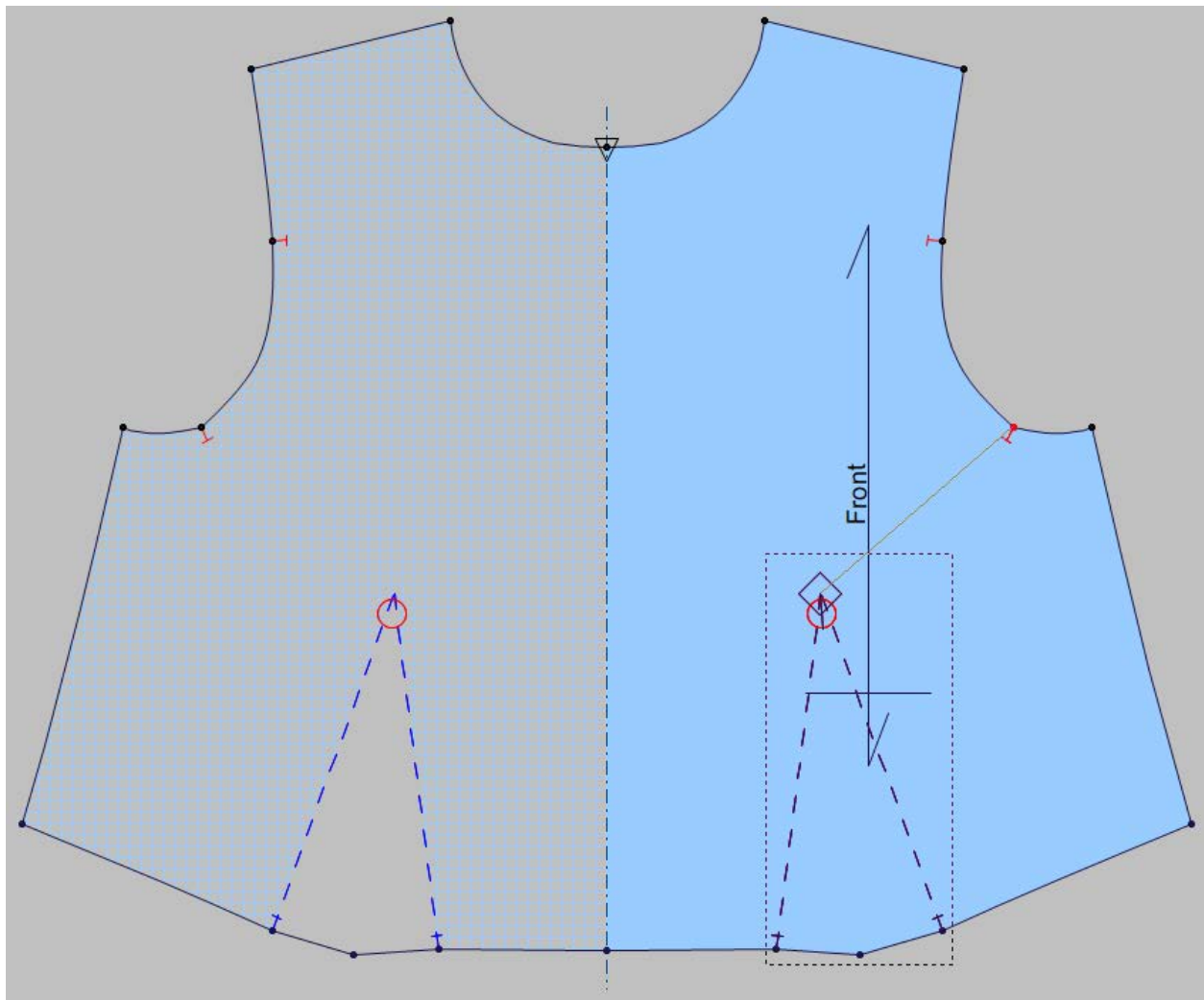
The dart will be closed across the entire pattern which will affect the entire shape. In this example the bust and the across shoulder are getting smaller.



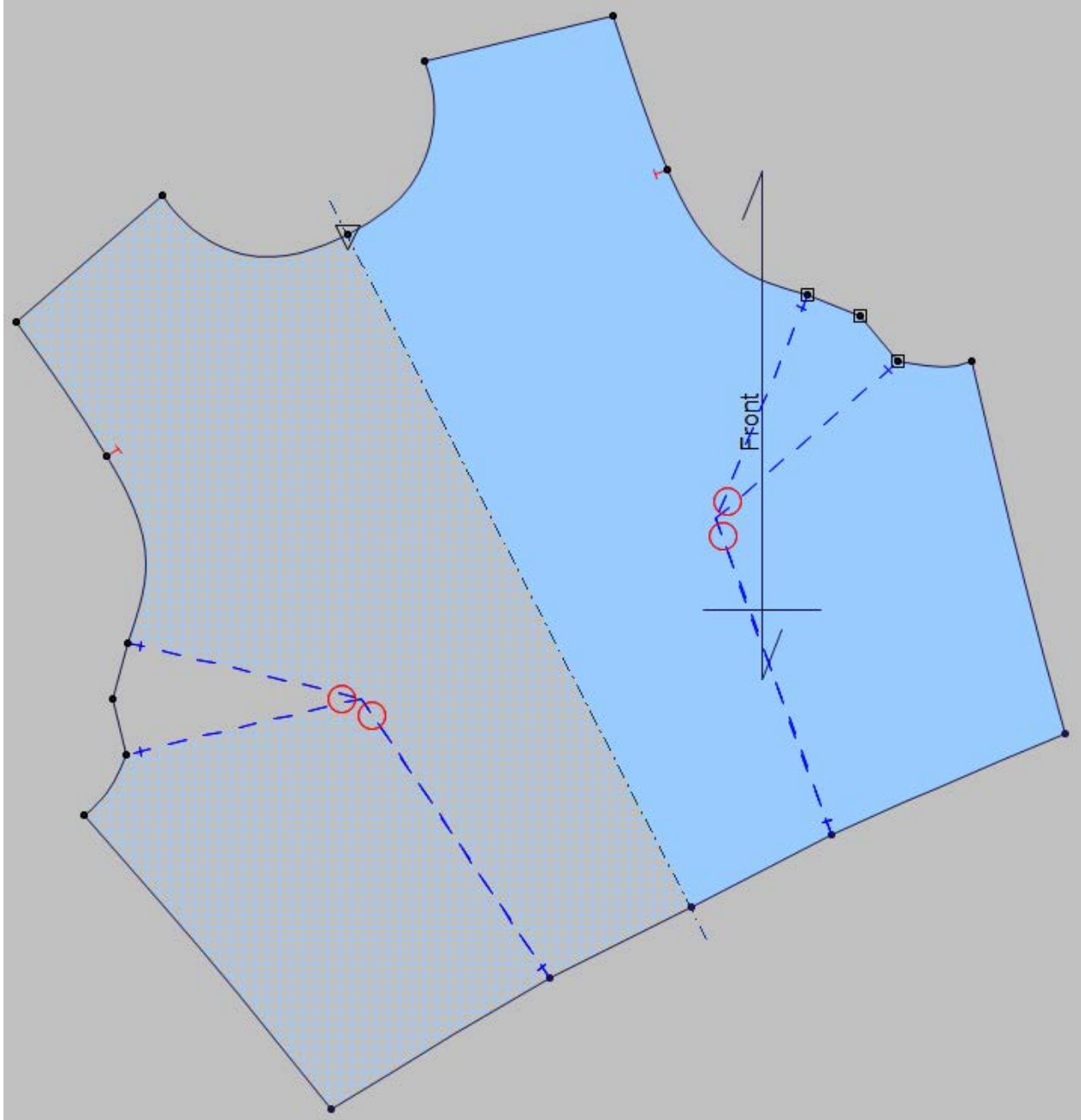
This will also not accurately close the dart and you will not get the correct shape at the opening of the dart.

## Close/ Reopen Dart

Select Close / Reopen Dart, click the tip of the dart to select it then click on the external of the piece where the dart will be temporarily moved to.



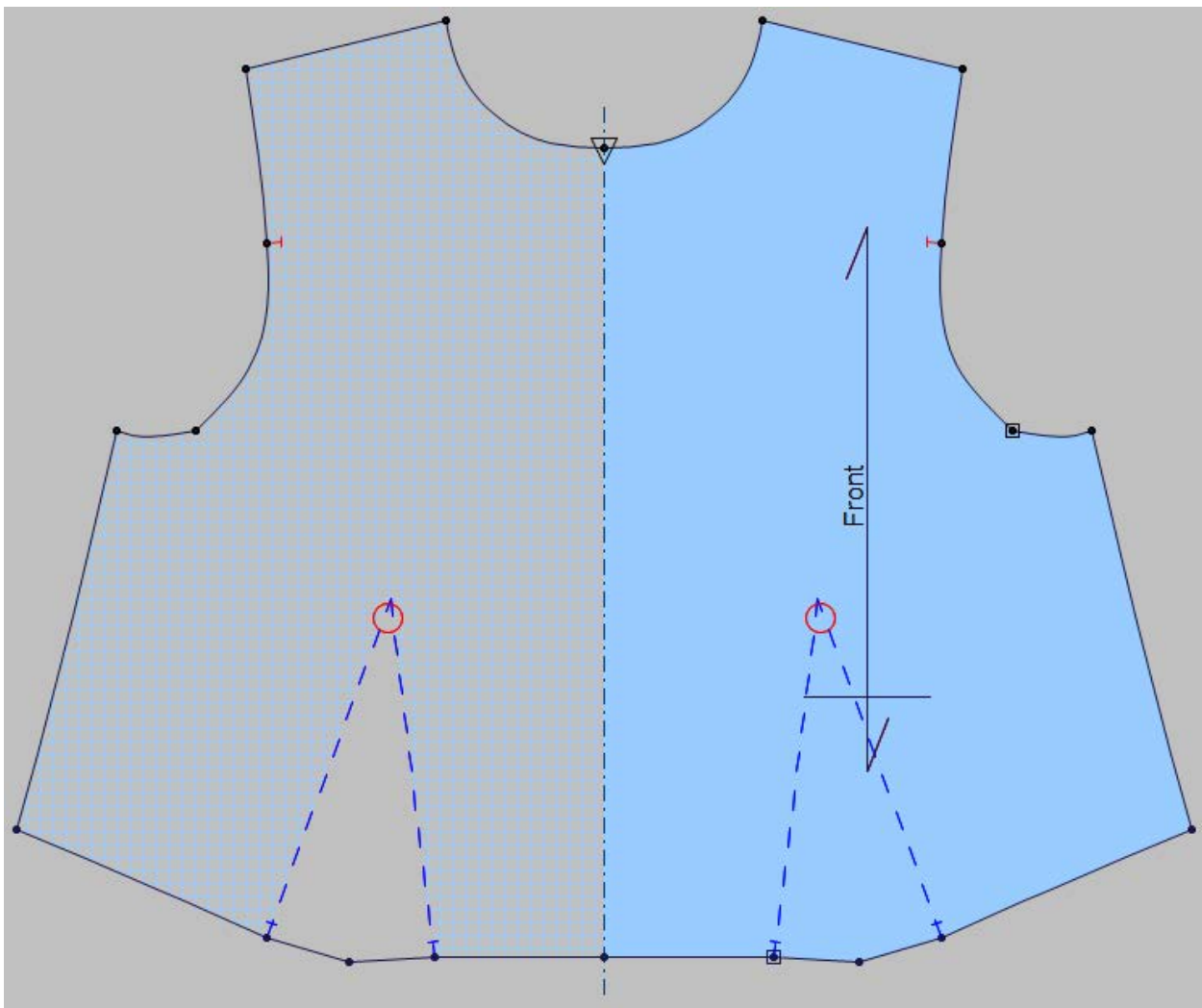
The dart will be moved to the temporary location.



If the pattern needs to be modified you can do that while the dart is relocated.

Once you are done you can move the dart back to the original location.

With the Close / Reopen Dart tool Shift + Click on the tip of the dart.



This document contains proprietary and confidential information of EFI- Optitex. This document shall not be used, disclosed or reproduced, in whole or in any part, for any purpose other than to evaluate the information contained herein, without the prior written consent of EFI-Optitex. Title in and to this document and all information contained herein remains at all times with EFI-Optitex.