



efi | OPTITEX

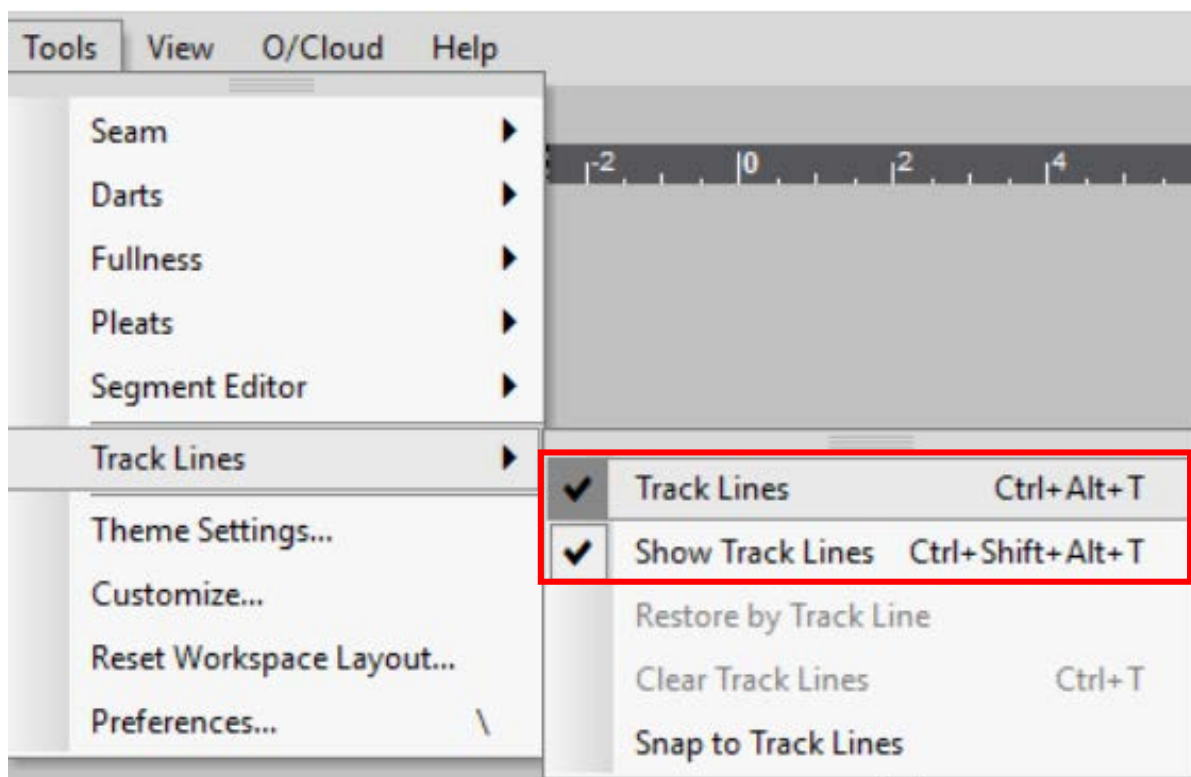
DID YOU KNOW?

Track Lines

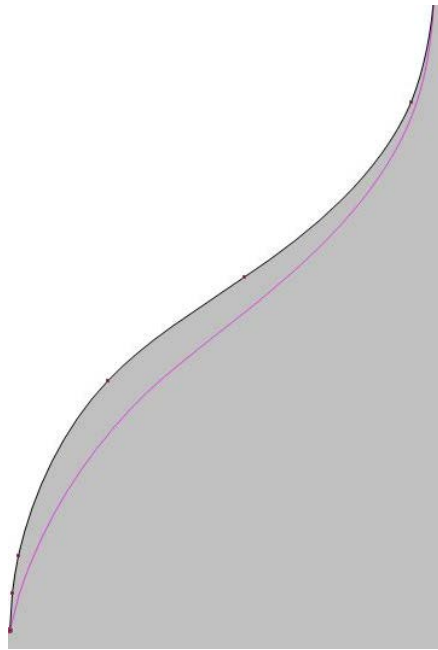
Did you know... You can...?

Edit and restore track lines?

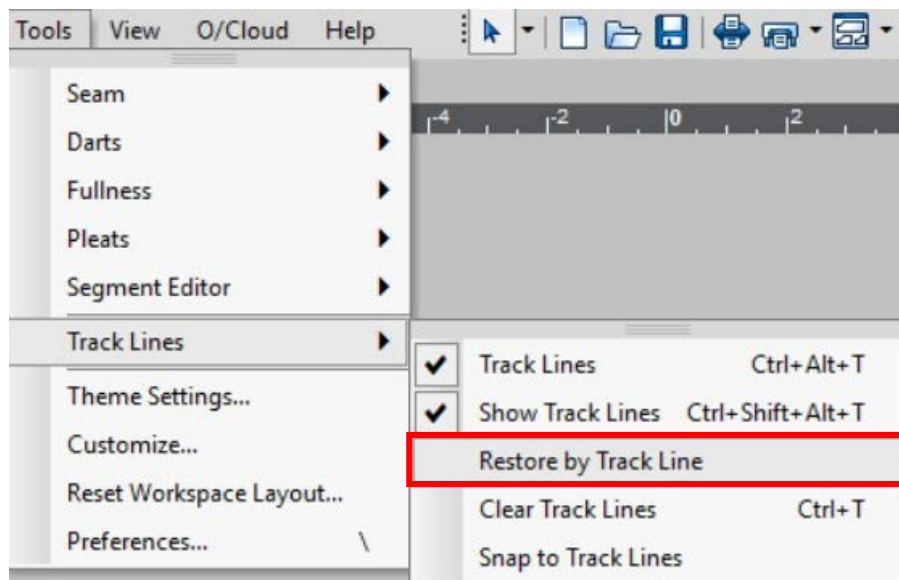
To use track lines, make sure you have them turned on and showing before making changes to your patterns. You can turn them on by going to Tools -> Track Lines and checking “show track lines” and “track lines”.



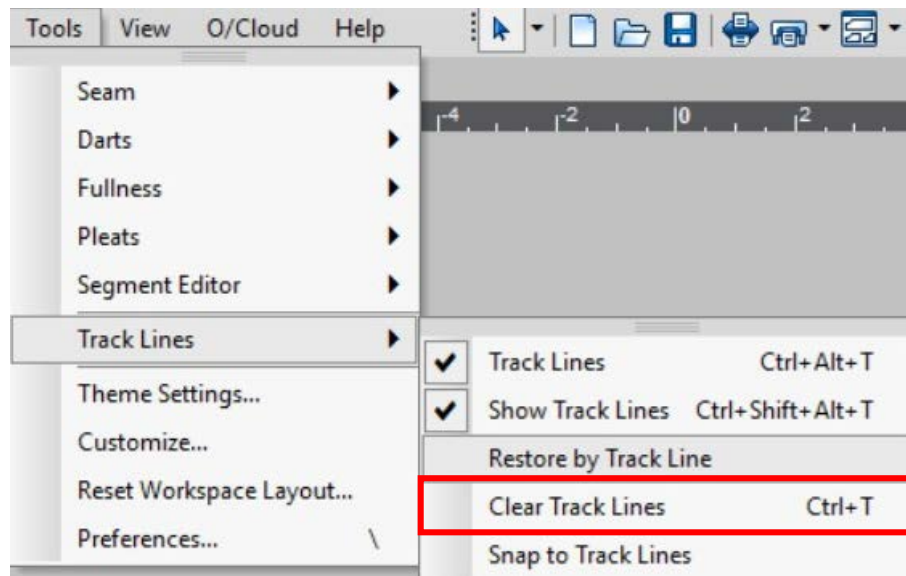
Once the track lines are turned on, you can begin making changes to your pattern. After you make a change to your pattern, you will see a track line where the original line once stood.



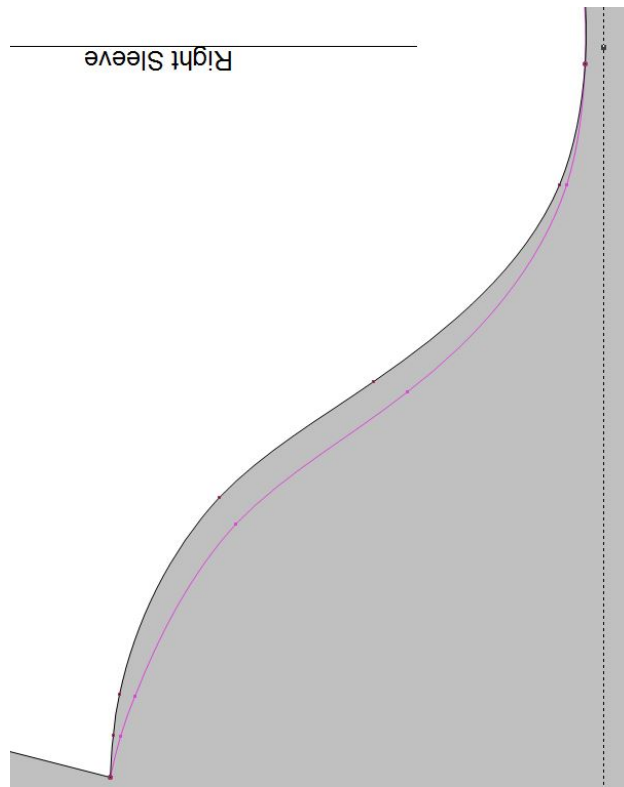
If you wish to return to a previous track line you can go to Tools -> Track Lines and check “restore by Track Lines”.



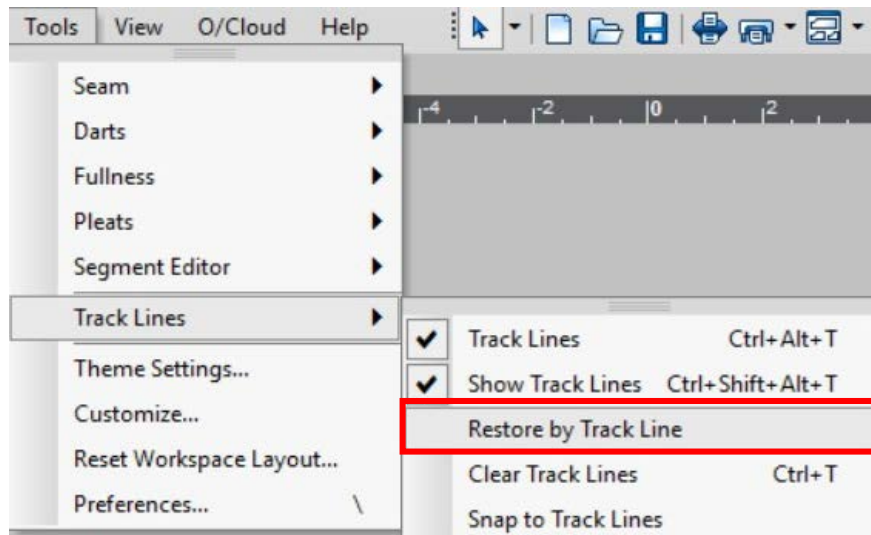
If you want to clear your track lines, you can do so by selecting “Clear Track Lines”.

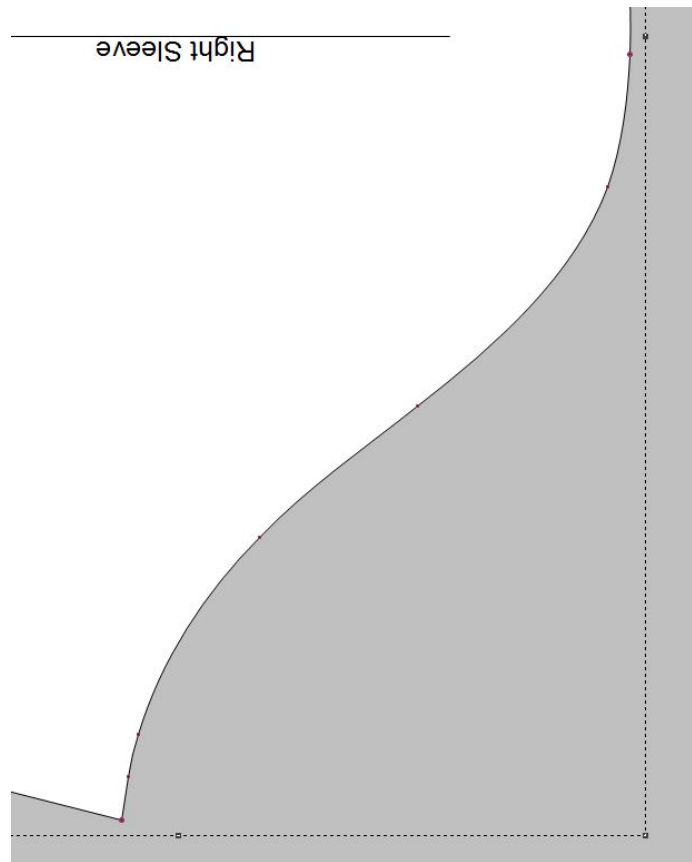


Lastly, you can use the Snap to Track Lines function to edit your track line. Let's say for example I want to use my track line, but I need to make some small adjustments to my sleeve cap. I can select “Snap to Track Lines” and use the move point tool (M) to make a small adjustment.



Just select “Restore by Track Line” and the updated track line will be your new contour.





NOTE: Track lines can be saved with a .PDS file. This way you can track changes made to a pattern as long as the track lines were not cleared prior to saving the file.

This document contains proprietary and confidential information of EFI- Optitex. This document shall not be used, disclosed or reproduced, in whole or in any part, for any purpose other than to evaluate the information contained herein, without the prior written consent of EFI-Optitex. Title in and to this document and all information contained herein remains at all times with EFI-Optitex.