

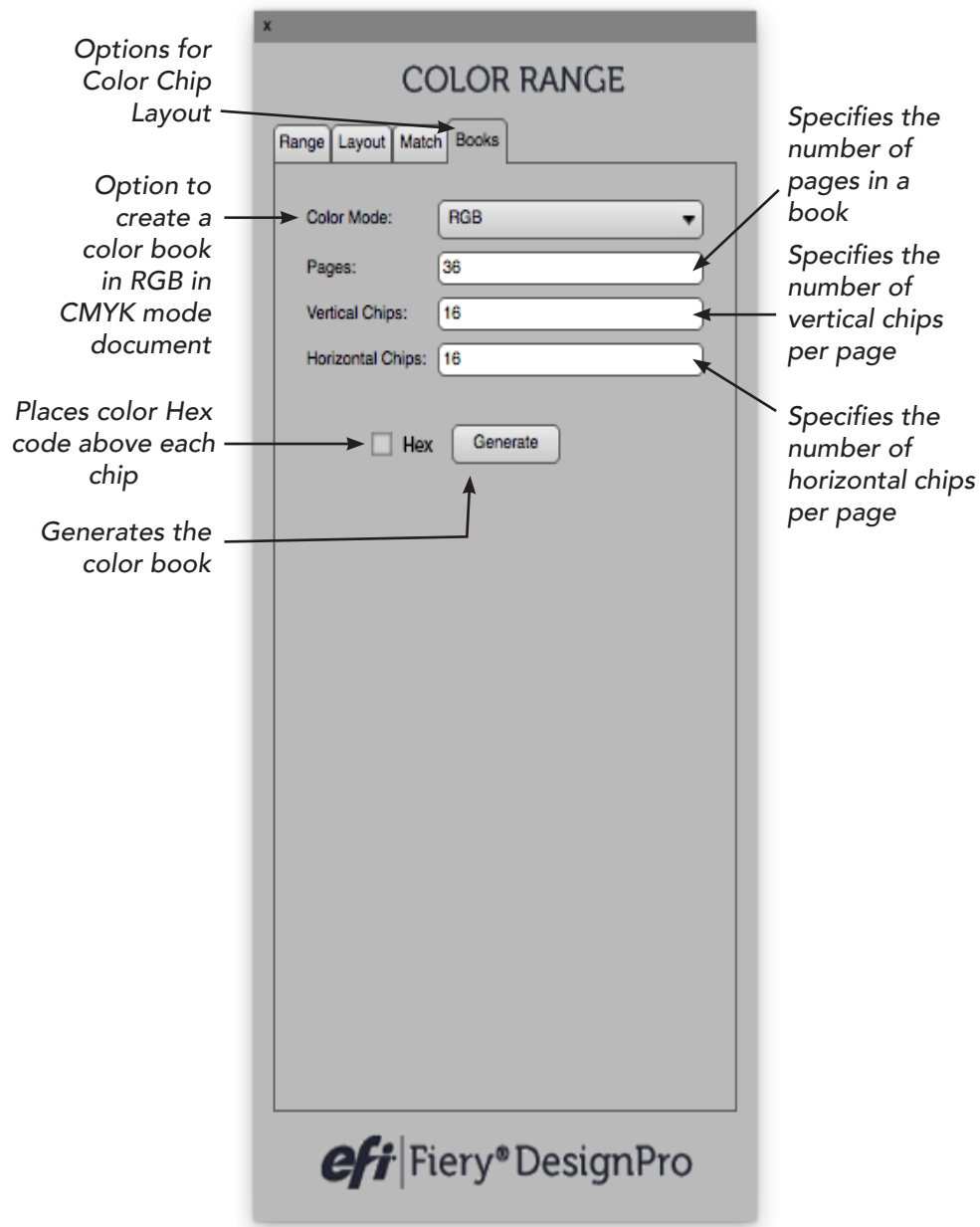
***efi***<sup>®</sup> | **Fiery**<sup>®</sup> DesignPro

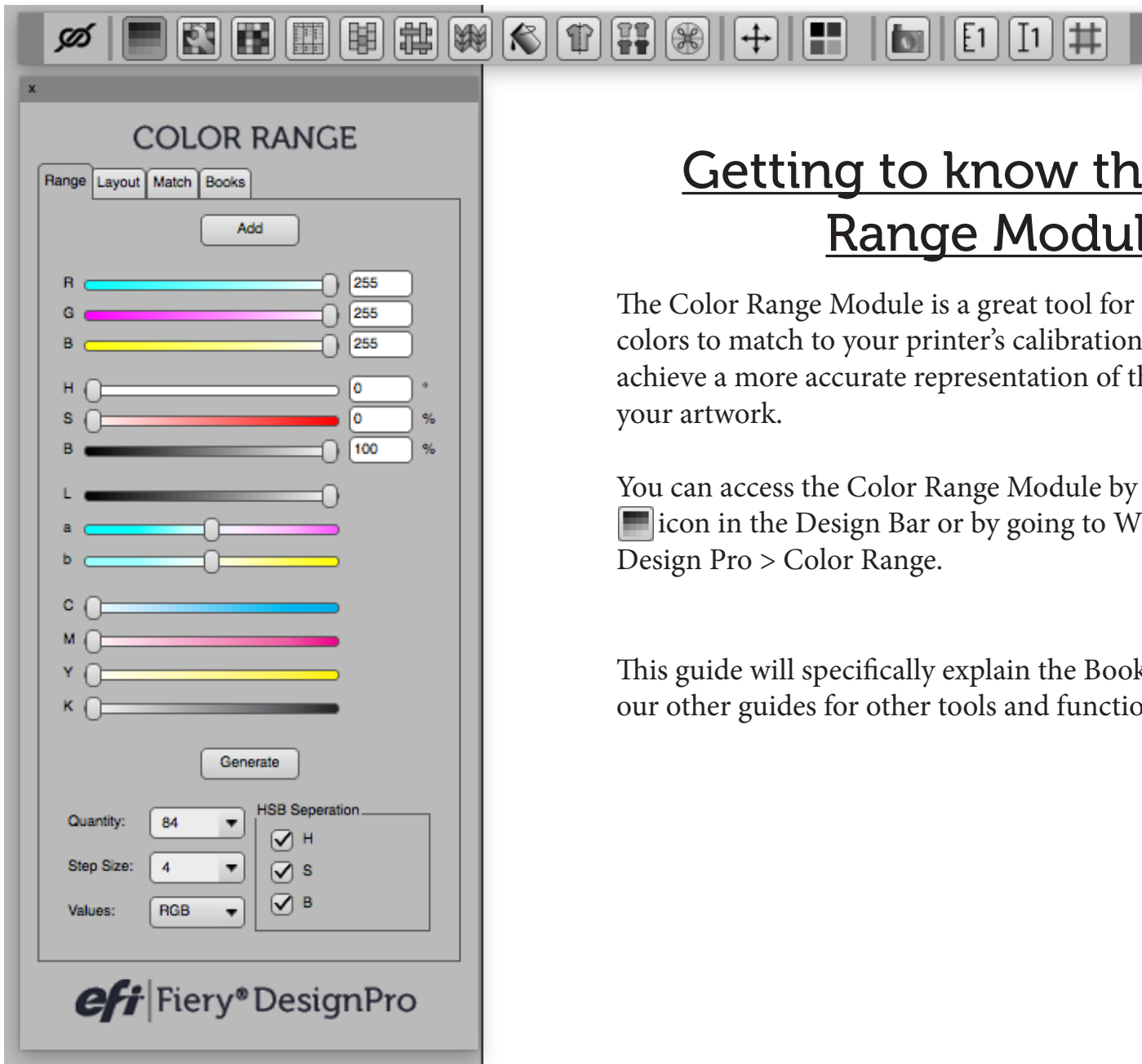


**COLOR RANGE TOOL**  
**Books**




# Exploring the layout of Color Range: Books tab





## Getting to know the Color Range Module

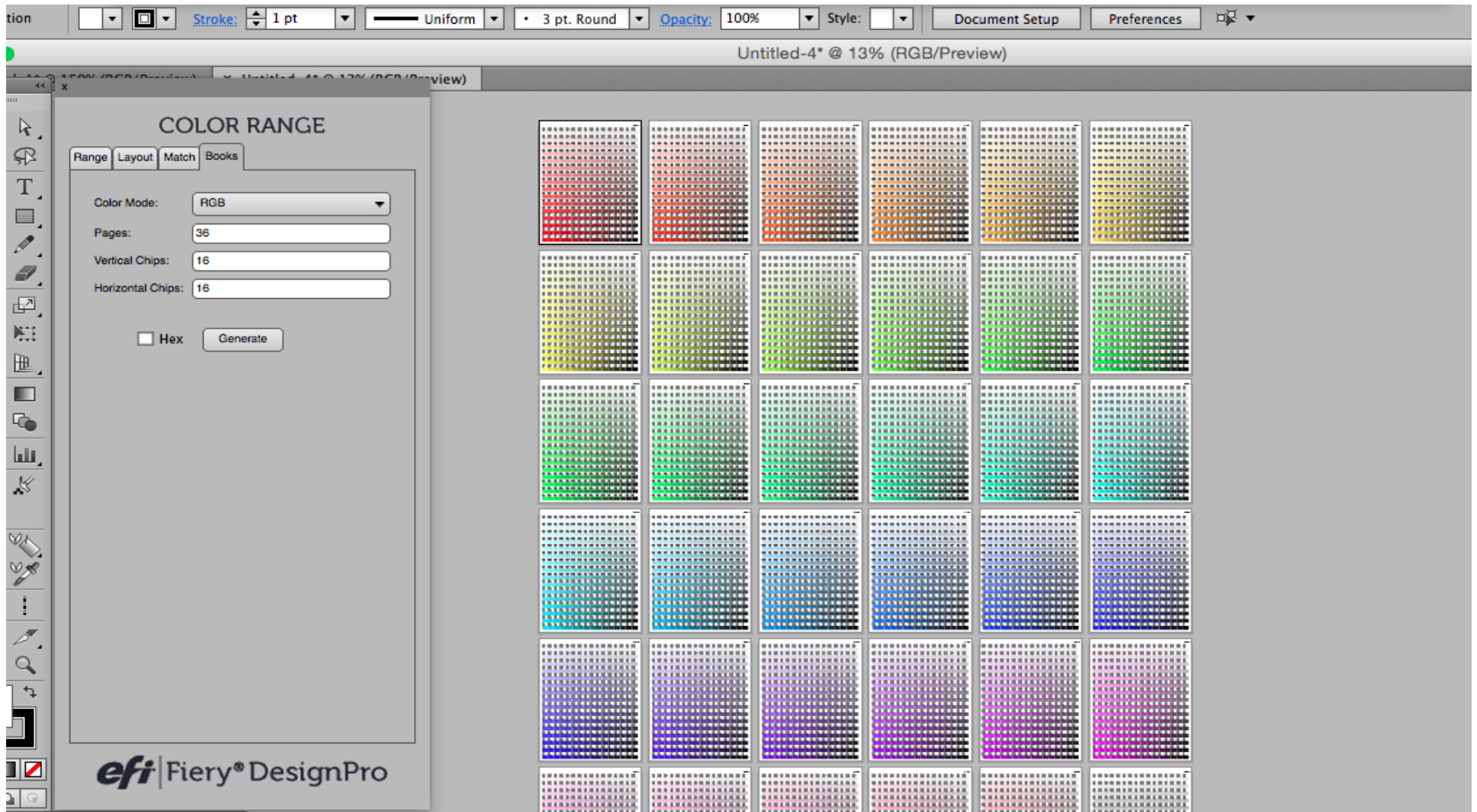
The Color Range Module is a great tool for mixing digital colors to match to your printer's calibration and will help you achieve a more accurate representation of the colors used in your artwork.

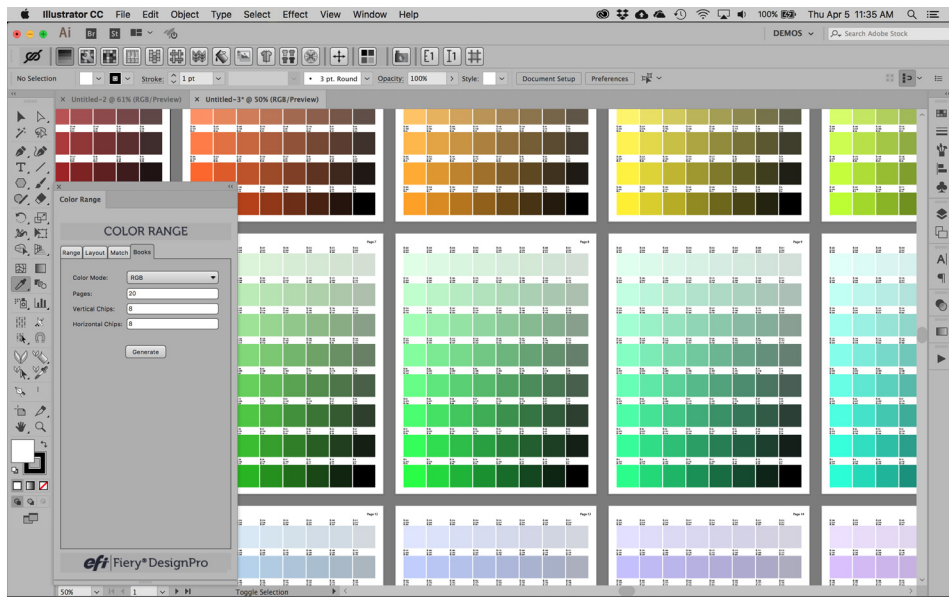
You can access the Color Range Module by clicking on the  icon in the Design Bar or by going to Window > Fiery Design Pro > Color Range.

This guide will specifically explain the Books tab. Please see our other guides for other tools and functions.

# The Books Tab

The first place you can start with matching color is under the Books Tab in the Color Range Module. It is a fast way of generating a robust spectrum of colors to print out and have on hand to match your physical color chips to.

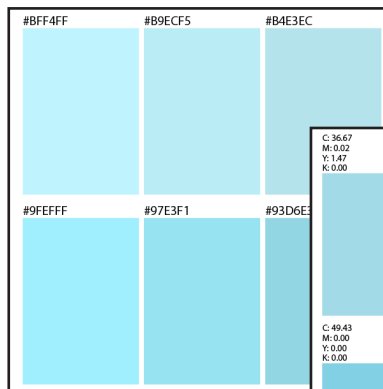




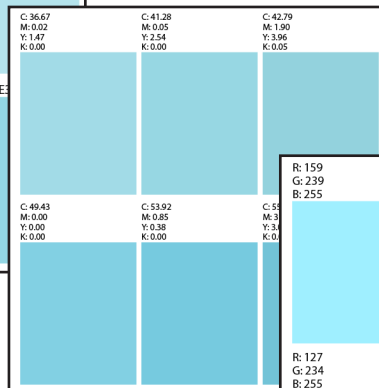
To make a Color Book, click on the Books Tab. Choose between RGB or CMYK in the Color Mode drop-down menu and then type in the number of pages you'd like to print as well as the number of chips you'd like to print horizontally and vertically on each page. Then press Generate. A new document will be created with multiple art boards. The length of time it takes to generate the book will depend on how many pages and chips you've indicated to place horizontally and vertically. The larger the number the longer it will take to generate. Looking closer at the pages created in the Color Book, you will find either RGB or CMYK values printed above each chip.

If you check the Hex option, it will place the color Hex code above each chip. The Illustrator document mode will still be determined by CMYK or RGB.

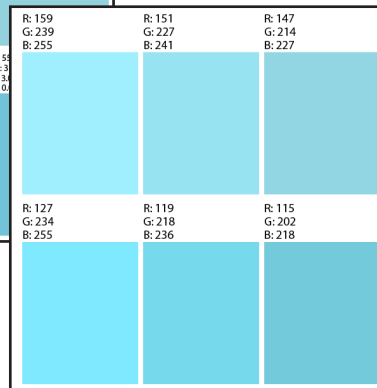
### HEX Values



### CMYK Values



### RGB Values



When you are ready to match color, use the Color Book to find a printed chip that is the closest match to your physical color chip. Double-click your Fill Box in Illustrator and enter in the color value of the chip you just matched.

The Color Book is meant to only be a starter in matching your colors by getting you an approximate match. If you'd like to get a match that is as close to exact as possible, the next step would be to move on to the Range Tab.

If you are having a challenge with anything related to our products

PLEASE CONTACT THE SUPPORT TEAM:



589 8th avenue, 8th Floor | New York, NY 10018

[FieryDesignProSupport@efi.com](mailto:FieryDesignProSupport@efi.com)

Live support available 9am - 6pm Eastern Standard Time  
Support: 646.766.0359  
Main: 212.391.2370

*For guided tutorials, please visit [elearning@efi.com](mailto:elearning@efi.com)*

*For articles published on DesignPro topics as well as forum style discussions about DesignPro tools, please visit [communitites.efi.com](http://communitites.efi.com) for more information*