

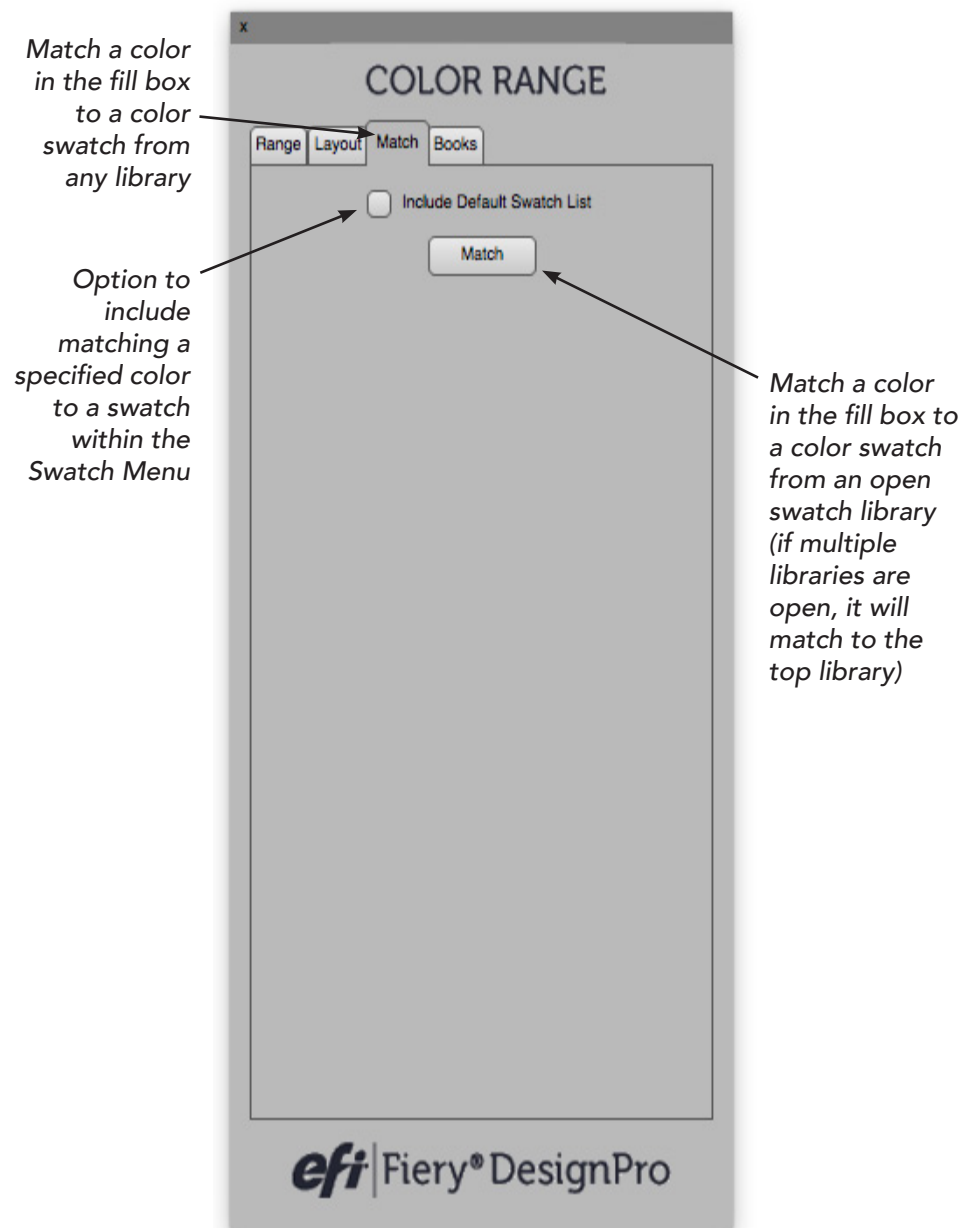
***efi***<sup>®</sup> | **Fiery**<sup>®</sup> DesignPro

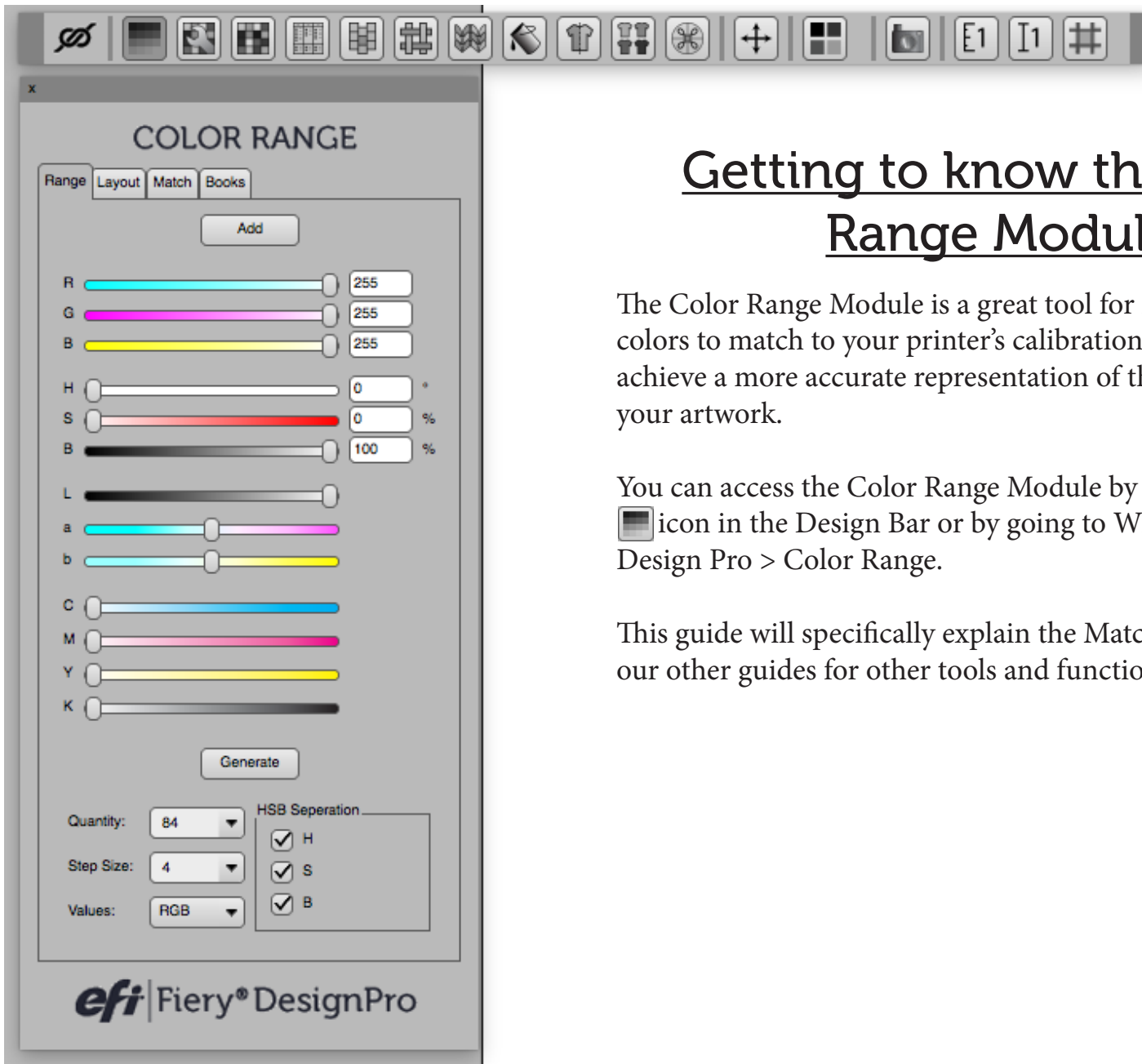


**COLOR RANGE TOOL  
Books**




# Exploring the layout of Color Range





## Getting to know the Color Range Module

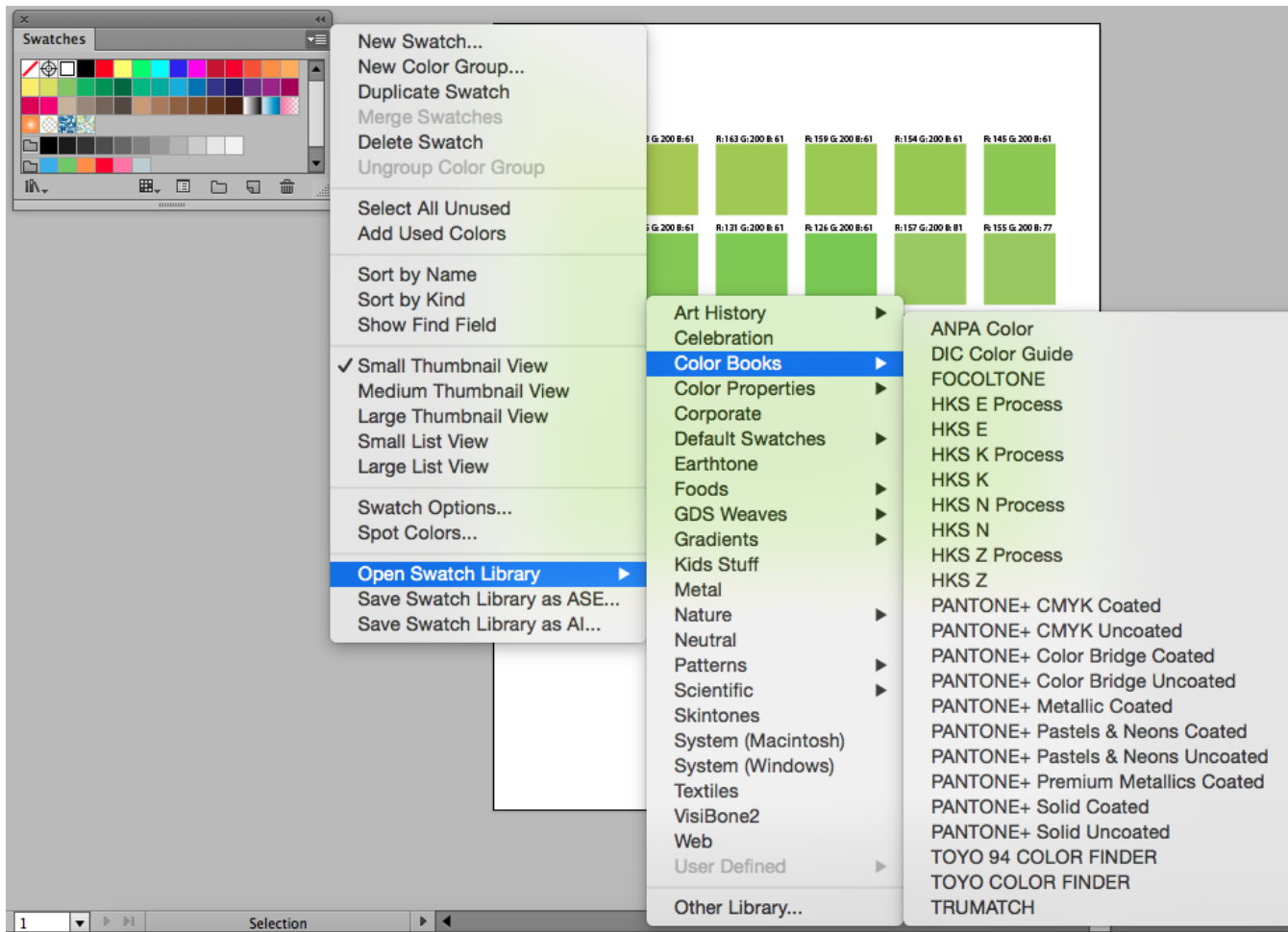
The Color Range Module is a great tool for mixing digital colors to match to your printer's calibration and will help you achieve a more accurate representation of the colors used in your artwork.

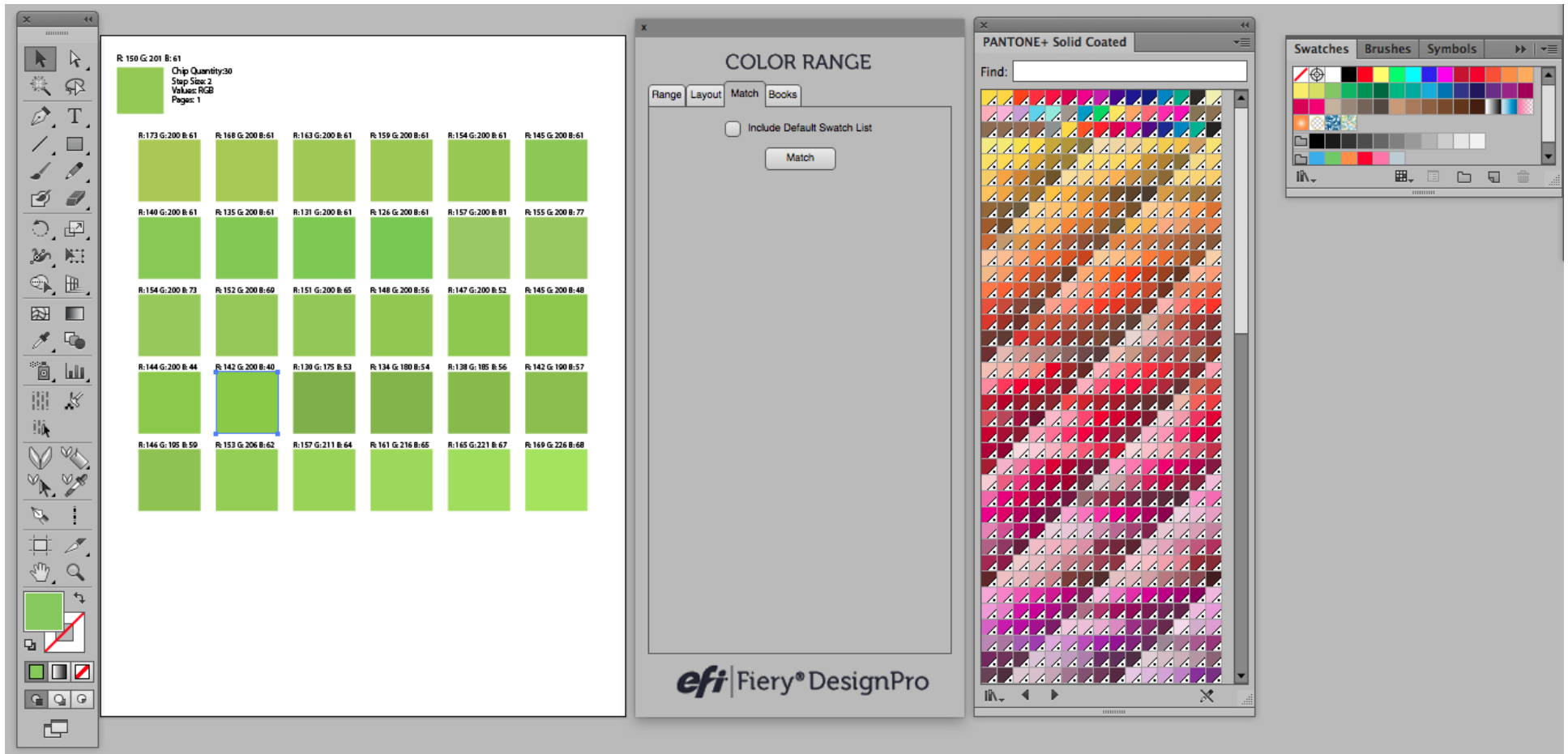
You can access the Color Range Module by clicking on the  icon in the Design Bar or by going to Window > Fiery Design Pro > Color Range.

This guide will specifically explain the Match tab. Please see our other guides for other tools and functions.

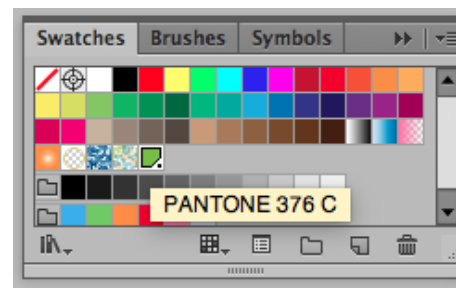
# The Match Tab

The last feature in the Color Range Module gives you the option to match any color to a swatch in a Swatch Library, like a Pantone Library. To match a color to a Pantone Library, open up the library you would like to use. Open your Swatches (Window > Swatches) and then click on the Swatch Option button in the upper right corner of the Window. Scroll down to “Open Swatch Library” and navigate to the Pantone Library you wish to match to. In this case, we are using Pantone+ Solid Coated.





After opening a swatch library, use the eye dropper tool to select the color you wish to match to a color in the open Swatch Library. Once that color is in your Fill box, press the “Match” button in the Match Tab. The color in the Swatch Library that is closest to the color in the Fill box will automatically place itself in the main Swatch Library. If there are multiple swatch libraries open, it will match to the library that is on top or was last opened and selected.



If you are having a challenge with anything related to our products

PLEASE CONTACT THE SUPPORT TEAM:



589 8th avenue, 8th Floor | New York, NY 10018

[FieryDesignProSupport@efi.com](mailto:FieryDesignProSupport@efi.com)

Live support available 9am - 6pm Eastern Standard Time

Support: 646.766.0359

Main: 212.391.2370

*For guided tutorials, please visit [elearning@efi.com](mailto:elearning@efi.com)*

*For articles published on DesignPro topics as well as forum style discussions about DesignPro tools, please visit [communitites.efi.com](http://communitites.efi.com) for more information*